

Specification

Raw Fibres are single strand PMMA acrylic optical fibres, available in a wider range of diameters for a variety of applications. Endpoint fibres are ideal for star field ceilings, point-of-purchase displays, floor tiles, wallscapes and chandeliers.

Our PMMA Fibre is manufactured from Mitsubishi / ESKA raw fibre.

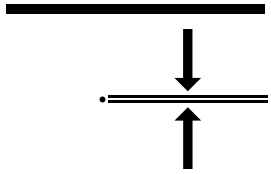
Endpoint fibre is offered on a spool as an individual strand but we can custom cut lengths to suit all needs and purposes. Caution must be exercised when handling these individual fibres as they do not have a protective PVC jacket.



Cable Construction

Single core untwisted PMMA acrylic optical fibres in an array of sizes.

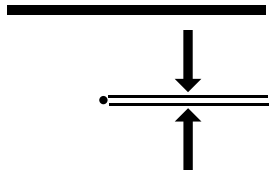
The cable diameter is determined by the fibre quantity:		
Product Codes	Diameter (inches)	Diameter (mm)
CK10	.010"	0.25
CK20	.020"	0.5
CK30	.030"	0.75
CK40	.040"	1.0
CK60	.060"	1.5
CK80	.080"	2.0
CK120	.120"	3.0



Model No.

CK10

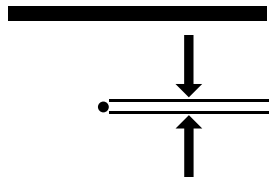
Raw Fibre End emitting cable, .010" (0.25mm) in diameter. Maximum (smallest) Bend Radius = 5mm



Model No.

CK20

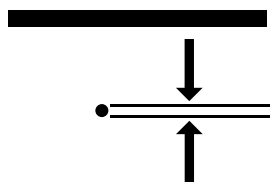
Raw Fibre End emitting cable, .020" (0.5mm) in diameter. Maximum (smallest) Bend Radius = 10mm



Model No.

CK30

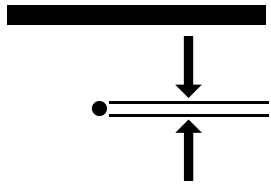
Raw Fibre End emitting cable, .030" (0.75mm) in diameter. Maximum (smallest) Bend Radius = 15mm



Model No.

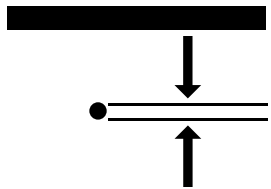
CK40

Raw Fibre End emitting cable, .040" (1.0mm) in diameter. Maximum (smallest) Bend Radius = 20mm



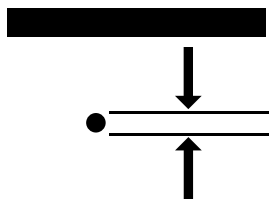
Model No.
CK60

Raw Fibre End emitting cable, .060" (1.5mm) in diameter. Maximum (smallest) Bend Radius = 30mm



Model No.
CK80

Raw Fibre End emitting cable, .080" (2.0mm) in diameter. Maximum (smallest) Bend Radius = 40mm



Model No.
CK120

Raw Fibre End emitting cable, .120" (3.0mm) in diameter. Maximum (smallest) Bend Radius = 60mm